

Photographic Documentation

Name of Facility: Bayview Water and Sewer District

Inspector(s): Suzanne Scheidt

Inspection Date: Tuesday, March 26, 2019

Purpose of Inspection: Sanitary Survey



Publish Date: Wednesday 3 April 2019

Idaho Department of Environmental Quality
 Photographic Documentation For Bayview Water and Sewer District

Table of Photographs:

Photograph 1: Well 7 diesel manual switchover generator 4

Photograph 2: Well 7 diesel manual switchover generator 4

Photograph 3: Well 7 water lubed VTLS 5

Photograph 4: Well 7 screened casing vent 5

Photograph 5: Well 7 discharge appurtenances..... 5

Photograph 6: Well 7 discharge appurtenances..... 5

Photograph 7: Well 7 air/pressure release (torpedo casing)..... 6

Photograph 8: Well 7 air/pressure relief (torpedo casing)..... 6

Photograph 9: Well 7 pressure gage..... 7

Photograph 10: Well 7 emergency chlorination components..... 7

Photograph 11: Well 7 PLC tied to SCADA relay 8

Photograph 12: Well 7 diesel fuel tank w/ secondary containment 8

Photograph 13: Well 7 building 8

Photograph 14: Well 8 8

Photograph 15: Well 8 controls 9

Photograph 16: Well 8 discharge appurtenances..... 9

Photograph 17: Well 8 food grade oil..... 9

Photograph 18: Well 8 discharge appurtenances..... 9

Photograph 19: Well 8 torpedo casing pressure/air release..... 10

Photograph 20: Well 8 discharge appurtenances..... 10

Photograph 21: Well 8 discharge appurtenances..... 11

Photograph 22: Well 8 building 11

Photograph 23: Farragut Tank 12

Photograph 24: Farragut Tank internal stairway access..... 12

Photograph 25: Farragut Tank shared inflow/outflow 12

Photograph 26: Farragut Tank overflow 12

Photograph 27: Farragut Tank overflow 13

Photograph 28: Farragut Tank shared inflow/outflow 13

Photograph 29: Farragut Tank isolation valves 13

Photograph 30: Farragut Tank shared inflow/outflow isolation valves 13

Photograph 31: Farragut Tank shared inflow/outflow isolation valves 14

Photograph 32: Farragut Tank shared inflow/outflow to tank floor 14

Photograph 33: Farragut Tank PLC SCADA relay/radio equipped w back-up battery 15

Photograph 34: Farragut Tank access ladder..... 15

Photograph 35: Cape Horn Booster Station 15

Photograph 36: Cape Horn booster station propane generator w auto-switchover 15

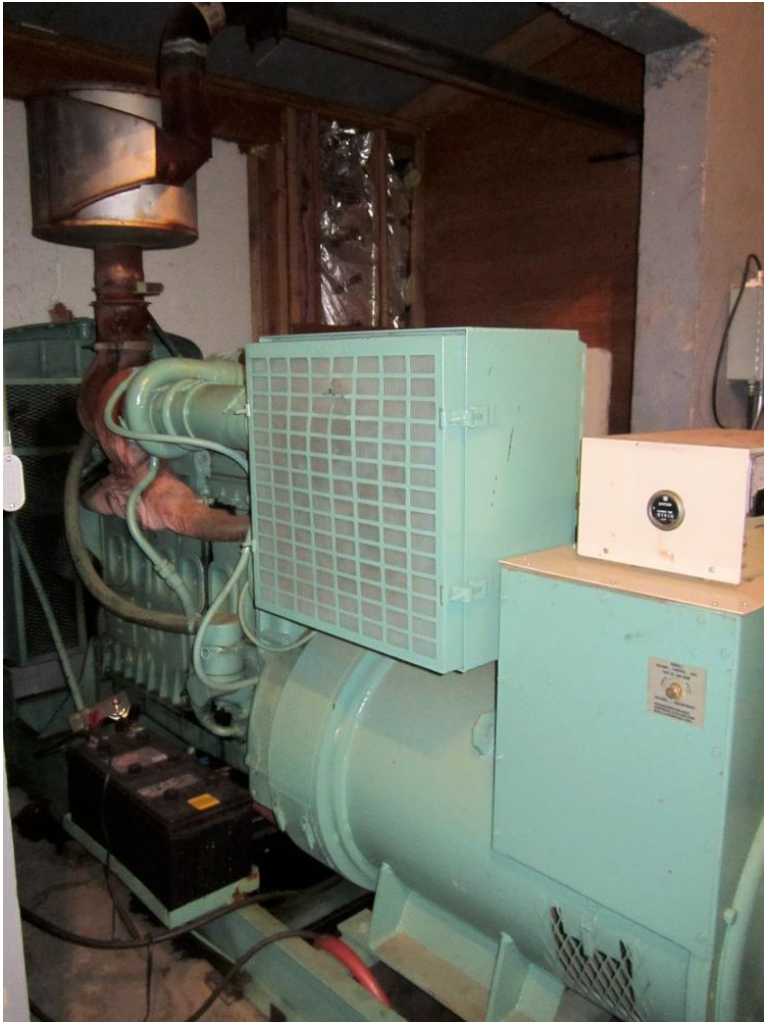
Photograph 37: Cape Horn booster station vault 16

Photograph 38: Cape Horn booster station vault..... 16

Idaho Department of Environmental Quality
Photographic Documentation For Bayview Water and Sewer District

Photograph 39: Cape Horn booster station vault	16
Photograph 40: Cape Horn booster station flow meter	16
Photograph 41: Cape Horn booster station	17
Photograph 42: Cape Horn tanks (30K each)	17
Photograph 43: Cape Horn tanks shared influent/effluent	17
Photograph 44: Cape Horn tank screened vent/overflow 1	17
Photograph 45: Cape Horn tank screened vent/overflow 2	18
Photograph 46: Farragut tank PRV	18
Photograph 47: Farragut tank PRV by-pass	18
Photograph 48: Farragut tank PRV by-pass	18
Photograph 49: Farragut tank PRV	19
Photograph 50: Farragut tank PRV w torpedo casing pressure/air release	19
Photograph 51: Farragut tank PRV	19
Photograph 52: Dromore booster station	19
Photograph 53: Dromore booster pumps	20
Photograph 54: Dromore booster pumps and flow meter	20
Photograph 55: Pend Oreille tank and booster station	20
Photograph 56: Pend Oreille tank vent w screen	20
Photograph 57: Pend Oreille tank overflow	21
Photograph 58: Pend Oreille tank VFD controls	21
Photograph 59: Pend Oreille booster pumps	21
Photograph 60: Pend Oreille boosted discharge tee (PRV required on one tee)	21
Photograph 61: Pend Oreille boosted discharge (hydro tank waterlogged)	22
Photograph 62: Pend Oreille boosted discharge	22
Photograph 63: Pend Oreille booster pump isolation valves	22
Photograph 64: Limekiln booster propane generator with auto-switchover	22
Photograph 65: Limekiln booster pump building	23
Photograph 66: Limekiln booster pumps	23
Photograph 67: Limekiln suction and boosted discharge lines	23
Photograph 68: Limekiln booster pump controls	23
Photograph 69: Limekiln booster pump isolation valves	24

Idaho Department of Environmental Quality
Photographic Documentation For Bayview Water and Sewer District



Photograph 1: Well 7 diesel manual switchover generator



Photograph 2: Well 7 diesel manual switchover generator

Idaho Department of Environmental Quality
Photographic Documentation For Bayview Water and Sewer District



Photograph 3: Well 7 water lubed VTLS



Photograph 4: Well 7 screened casing vent



Photograph 5: Well 7 discharge appurtenances



Photograph 6: Well 7 discharge appurtenances

Idaho Department of Environmental Quality
Photographic Documentation For Bayview Water and Sewer District



Photograph 7: Well 7 air/pressure release (torpedo casing)



Photograph 8: Well 7 air/pressure relief (torpedo casing)

Idaho Department of Environmental Quality
Photographic Documentation For Bayview Water and Sewer District



Photograph 9: Well 7 pressure gage



Photograph 10: Well 7 emergency chlorination components

Idaho Department of Environmental Quality
Photographic Documentation For Bayview Water and Sewer District



Photograph 11: Well 7 PLC tied to SCADA relay



Photograph 12: Well 7 diesel fuel tank w/ secondary containment



Photograph 13: Well 7 building



Photograph 14: Well 8

Idaho Department of Environmental Quality
Photographic Documentation For Bayview Water and Sewer District



Photograph 15: Well 8 controls



Photograph 16: Well 8 discharge appurtenances



Photograph 17: Well 8 food grade oil



Photograph 18: Well 8 discharge appurtenances

Idaho Department of Environmental Quality
Photographic Documentation For Bayview Water and Sewer District



Photograph 19: Well 8 torpedo casing pressure/air release



Photograph 20: Well 8 discharge appurtenances

Idaho Department of Environmental Quality
Photographic Documentation For Bayview Water and Sewer District



Photograph 21: Well 8 discharge appurtenances



Photograph 22: Well 8 building

Idaho Department of Environmental Quality
Photographic Documentation For Bayview Water and Sewer District



Photograph 23: Farragut Tank



Photograph 24: Farragut Tank internal stairway access



Photograph 25: Farragut Tank shared inflow/outflow

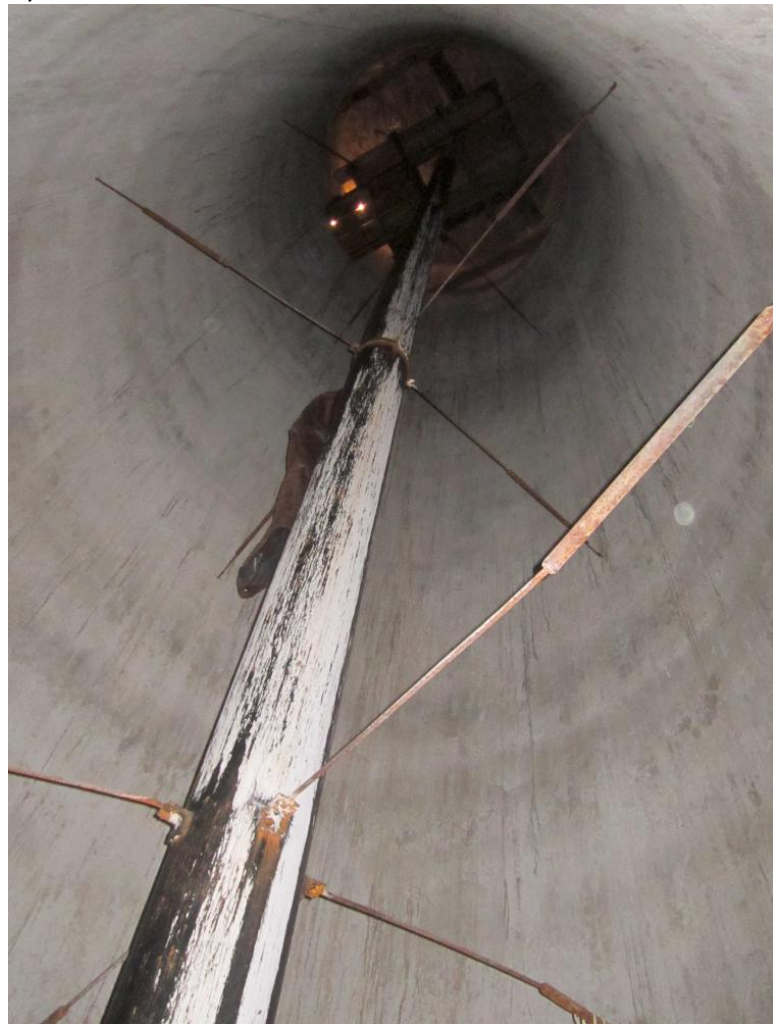


Photograph 26: Farragut Tank overflow

Idaho Department of Environmental Quality
Photographic Documentation For Bayview Water and Sewer District



Photograph 27: Farragut Tank overflow



Photograph 28: Farragut Tank shared inflow/outflow



Photograph 29: Farragut Tank isolation valves



Photograph 30: Farragut Tank shared inflow/outflow isolation valves

Idaho Department of Environmental Quality
Photographic Documentation For Bayview Water and Sewer District



Photograph 31: Farragut Tank shared inflow/outflow isolation valves



Photograph 32: Farragut Tank shared inflow/outflow to tank floor

Idaho Department of Environmental Quality
Photographic Documentation For Bayview Water and Sewer District



Photograph 33: Farragut Tank PLC SCADA relay/radio equipped w back-up battery



Photograph 34: Farragut Tank access ladder



Photograph 35: Cape Horn Booster Station



Photograph 36: Cape Horn booster station propane generator w auto-switchover

Idaho Department of Environmental Quality
Photographic Documentation For Bayview Water and Sewer District



Photograph 37: Cape Horn booster station vault



Photograph 38: Cape Horn booster station vault



Photograph 39: Cape Horn booster station vault



Photograph 40: Cape Horn booster station flow meter

Idaho Department of Environmental Quality
Photographic Documentation For Bayview Water and Sewer District



Photograph 41: Cape Horn booster station



Photograph 42: Cape Horn tanks (30K each)



Photograph 43: Cape Horn tanks shared influent/effluent



Photograph 44: Cape Horn tank screened vent/overflow 1

Idaho Department of Environmental Quality
Photographic Documentation For Bayview Water and Sewer District



Photograph 45: Cape Horn tank screened vent/overflow 2



Photograph 46: Farragut tank PRV



Photograph 47: Farragut tank PRV by-pass



Photograph 48: Farragut tank PRV by-pass

Idaho Department of Environmental Quality
Photographic Documentation For Bayview Water and Sewer District



Photograph 49: Farragut tank PRV



Photograph 50: Farragut tank PRV w torpedo casing pressure/air release



Photograph 51: Farragut tank PRV



Photograph 52: Dromore booster station

Idaho Department of Environmental Quality
Photographic Documentation For Bayview Water and Sewer District



Photograph 53: Dromore booster pumps



Photograph 54: Dromore booster pumps and flow meter



Photograph 55: Pend Oreille tank and booster station



Photograph 56: Pend Oreille tank vent w screen

Idaho Department of Environmental Quality
Photographic Documentation For Bayview Water and Sewer District



Photograph 57: Pend Oreille tank overflow



Photograph 58: Pend Oreille tank VFD controls



Photograph 59: Pend Oreille booster pumps



Photograph 60: Pend Oreille boosted discharge tee (PRV required on one tee)

Idaho Department of Environmental Quality
Photographic Documentation For Bayview Water and Sewer District



Photograph 61: Pend Oreille boosted discharge (hydro tank waterlogged)



Photograph 62: Pend Oreille boosted discharge



Photograph 63: Pend Oreille booster pump isolation valves



Photograph 64: Limekiln booster propane generator with auto-switchover

Idaho Department of Environmental Quality
Photographic Documentation For Bayview Water and Sewer District



Photograph 65: Limekiln booster pump building



Photograph 66: Limekiln booster pumps



Photograph 67: Limekiln suction and boosted discharge lines



Photograph 68: Limekiln booster pump controls

Idaho Department of Environmental Quality
Photographic Documentation For Bayview Water and Sewer District



Photograph 69: Limekiln booster pump isolation valves